

PF 41

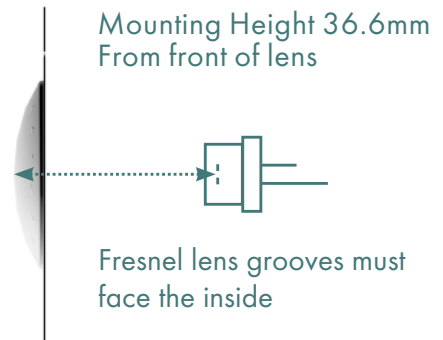
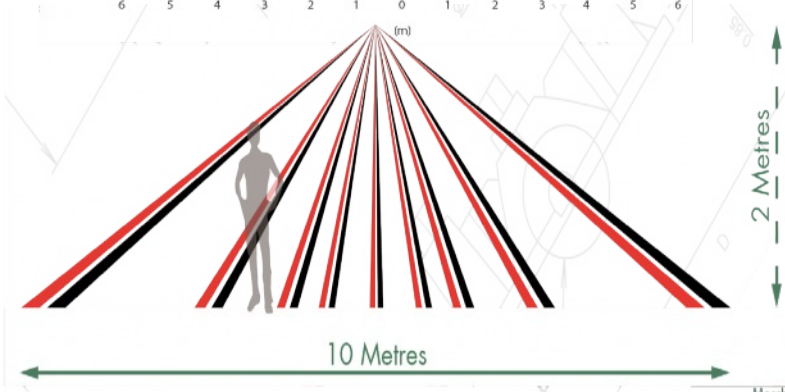
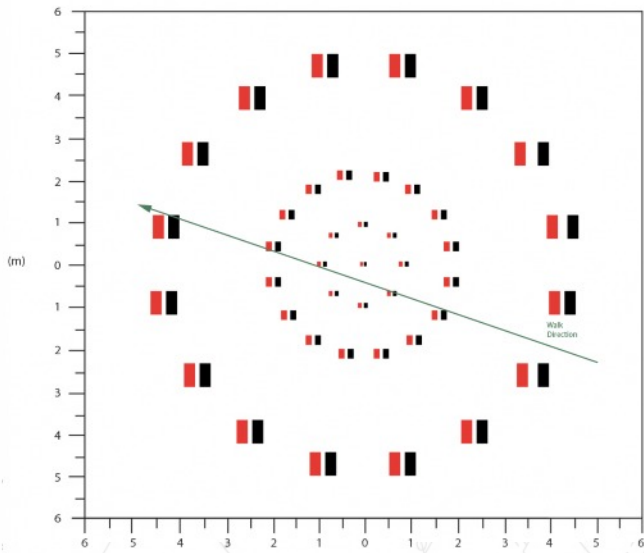
Item Code 9564
 Drawing Number A3- 41021

Available with different hole patterns, transparent, white, light grey, black and custom colours.

The PF 41 Ceiling lens is suitable for lighting / building control applications.

- Wide angle detection over 360 degrees
- Up to dia 25m coverage * * *
- Various mounting heights

Typical Field of View diagrams when used in conjunction with type A pyro



Note: Field of view (FOV) diagrams are idealised. Exact zones may depend on mounting conditions, detector type etc. FOV diagrams have been raytraced in reverse, i.e. from detector to the floor.

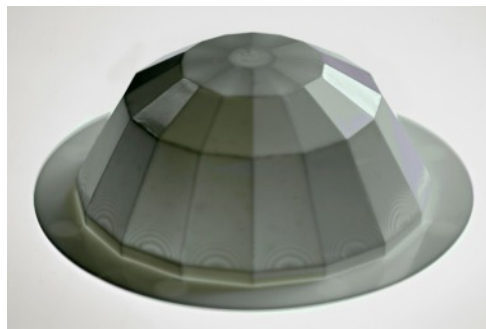


Making PIR Work

Leading design and manufacture of PIR Lenses

PF 41

Item Code 9564
Drawing Number A3 - 41021



Compatible Sensor Types	A, H, I	View on Website
Additional Sensor Types*	B*, C*, D*, E*, F*, G*	
Pyro Mounting Height	36.6mm from front of lens**	
Mounting Height from Floor	2 - 5 metres	
Detection Angle	120°	
Detection Range	Up to 5 metres	
Focal Length	36.6mm	
Material	Carclo HDPE	
Colours	Natural, White, Light Grey, Black	
Variants	None	
No. of Lenses	41	
Overall Lens Dimensions	54mm diameter	
Overall Part Dimensions	68.4mm x 23.9mm	
Mounting	Ceiling	

* May work with reduced signal. Recommend trial

** For some lenses the optical distance is critical- e.g. must equal 3.6+-0.1 mm on drawing "Optical Distance" or a spacer under Pyro to achieve correct focal length to lens. Beware of Pyro orientation. Pyro Mounting height (from top surface of optic to element plane on Pyro).

*** With correct orientation - 90 degree from the drawing on pyro table

**** A one off tooling charge may apply

Carclo Technical Plastics Ltd.
47 Waters Way - Mitcham - Surrey - CR4 4HR - UK
Tel: +44 (0) 208 685 0500 - sales@carclo-fresnels.com

Carclo Technical Plastics
600 Depot Street - Latrobe -PA 15650 - USA
Tel: +1 724 539 6995 - sales@carclo-usa.com

JVS Sales & Technical Consultants GmbH, Wiesenstrasse 104 - 53639 Königswinter - Germany
Tel: +49 2244 918 130 - sales@carclo-fresnels.com

Rev. 16-8-16